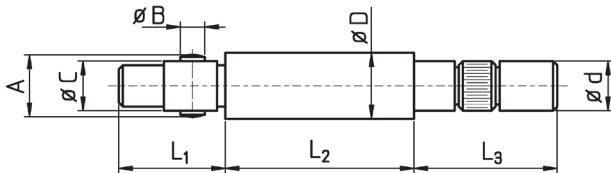


SPANNHÜLSEN  
SPANNHÜLSENLAGERUNGEN  
BAR FEED COLLETS  
REVOLVING ENDS



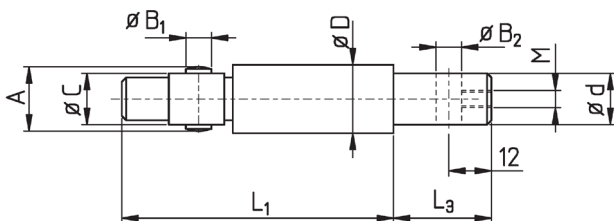
Robert-Bosch-Str. 2  
D-75233 Tiefenbronn  
Telefon: +49 7234 94592-0  
Telefax: +49 7234 94592-29  
E-Mail: [info@stalex.de](mailto:info@stalex.de)

## SPANNHÜLSENLAGERUNGEN / REVOLVING ENDS für FMB, IEMCA, BREUNING IRCO, TRAUB Lademagazine / Bar Loaders



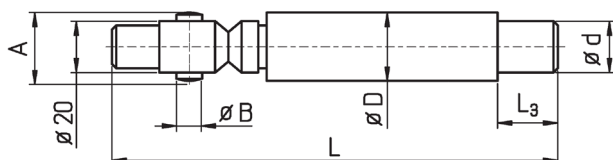
Bestell-Nr. Order-No.	d	D	A	B	C	L <sub>1</sub>	L <sub>2</sub>	L <sub>3</sub>
SHLGD10	8	10,3	9,8	4	7	27	43	31
SHLGD12	8	12	11,8	4	8	27	43	31
SHLGD13	8	13	11,8	6	11	27	43	31
SHLGD15	12	15	14,8	6	11	26	44	31
SHLGD16	12	16	15,8	6	11	26	44	31
SHLGD18	12	18	17,8	6	11	26	44	31
SHLGD20	17	20	19,8	8	14	39	47	31
SHLGD22	17	22	21,8	8	14	39	47	31
SHLGD23	17	23	21,8	8	14	44	42	28
SHLGD25	20	25	24,8	8	20	42	47	31
SHLGD28	20	28	24,8	8	20	42	47	31
SHLGD30	20	30	29,8	8	20	42	47	31
SHLGD32	20	32	31,8	8	20	42	47	30
SHLGD36	20	36	35,8	8	20	42	47	30
SHLGD42	20	42	41,8	8	20	42	47	30
SHLGD52	20	52	51,8	8	20	42	47	30

## SPANNHÜLSENLAGERUNGEN / REVOLVING ENDS für LNS Mini-Sprint S2



Bestell-Nr. Order-No.	d	D	A	B <sub>1</sub> / B <sub>2</sub>	C	L <sub>1</sub>	L <sub>3</sub>	M
SHLGL10	8	10	10	4	7	65	30	M4
SHLGL12	8	12	12	4	8	65	30	--
SHLGL15	12	15	15	6	11	66	30	M5
SHLGL18	12	18	18	6	11	66	30	--
SHLGL20	17	20	20	8	14	81	30	M8
SHLGL25	20	25	25	8	20	85,5	30	M8
SHLGL36	30	36	36	8 / --	20	158	40	--
SHLGL50	42	50	--	--	20	158	50	--

## SPANNHÜLSENLAGERUNGEN / REVOLVING ENDS für FMB, LNS, BREUNING IRCO Lademagazine / Bar Loaders



Bestell-Nr. Order-No.	d	D	A	B	L <sub>3</sub>	L
SHLGTD25 *	20	25	24,8	8	40	197
SHLGTD28 *	25	28	25,8	8	40	197
SHLGTD30 *	25	30	25,8	8	40	197
SHLGTD32 *	25	32	31	8	40	197
SHLGTD34 *	30	34	31	8	40	197
SHLGTD36 *	30	36	35	8	40	207
SHLGTD38	30	38	-	-	40	207
SHLGTD40	33	40	-	-	50	207
SHLGTD42	33	42	-	-	50	207
SHLGTD45	33	45	-	-	50	207
SHLGTD50	42	50	-	-	50	207
SHLGTD60	51	60	-	-	75	232
SHLGTD63	51	63	-	-	75	232
SHLGTD65	51	65	-	-	75	232
SHLGTD70 **	51	70				
SHLGTD80 **	51	80				

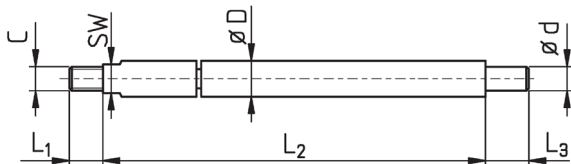
\* Verwendbar für Spannhülsen „Turbo“ und mit Querstift / \* Useable for Bar Feeder Collets „Turbo“ and pinned type

\*\* Auf Anfrage / \*\* On request

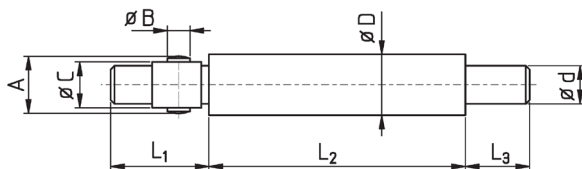
## SPANNHÜLSENLAGERUNGEN / REVOLVING ENDS für TORNOS Lademagazine / Bar Loaders

Bestell-Nr. Order-No.	d	D	A	B	L <sub>3</sub>	L
SHLGT032	22	32	31	8	30	192
SHLGT036	25	36	35	8	30	192

## SPANNHÜLSENLAGERUNGEN / REVOLVING ENDS für TORNOS, ROBOBAR Lademagazine / Bar Loaders



Bestell-Nr. Order-No.	d	D	A	B	C	L <sub>1</sub>	L <sub>2</sub>	L <sub>3</sub>
SHLGR05	M3	5,5	-	-	M4	7	78	8
SHLGR07	M5	7,5	-	-	M5	7	78	16



Bestell-Nr. Order-No.	d	D	A	B	C	L <sub>1</sub>	L <sub>2</sub>	L <sub>3</sub>
SHLGR10	7	10,5	9,8	4	7	25	73	16
SHLGR12	8	12	11,8	4	8	26	73	16
SHLGR16	10	16	14,8	6	11	28	116	16
SHLGR18	10	18	14,8	6	11	28	116	16
SHLGR21	14	20,5	19,8	8	14	40	110	20
SHLGR25	20	25	24,8	8	20	43	114	22
SHLGR26	20	26	24,8	8	20	43	114	22

## SPANNHÜLSENLAGERUNGEN / REVOLVING ENDS für IEMCA, CUCCHI Lademagazine / Bar Loaders

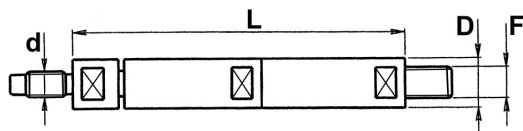


Bild 2

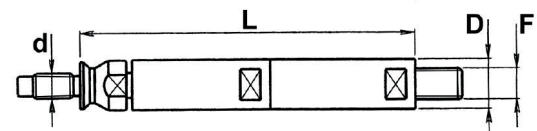
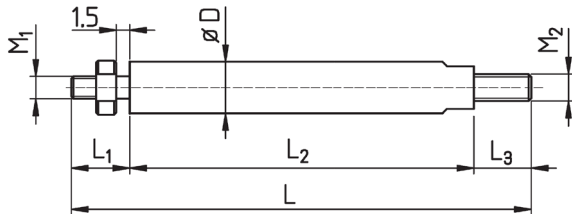


Bild 3

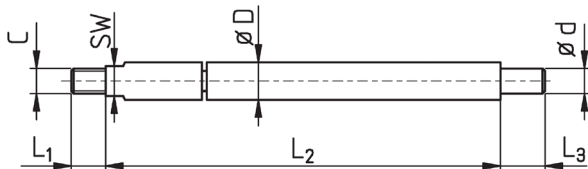
Bestell-Nr. Order-No.	D	L	F	d	Bild
Ch517120	19	100	M17x1,5li	M10x1,5li	2
Ch517120P	19	100	M17x1,5li	M14x1,5li	2
Ch517125	24	100	M20x1,5li	M14x1,5li	2
Ch517125P	24	100	M20x1,5li	M20x1,5li	2
Ch517130	29,3	121	M26x1,5li	M18x1,5li	2
Ch517130S	29,3	121	M26x1,5li	M18x1,5li	3
Ch517130P	29,3	121	M26x1,5li	M26x1,5li	2
Ch517138	38	109	M30x1,5li	M25x1,5li	2
Ch517138P	38	109	M30x1,5li	M30x1,5li	2

## SPANNHÜLSENLAGERUNGEN / REVOLVING ENDS für BECHLER, TORNOS Lademagazine / Bar Loaders



Bestell-Nr. Order-No.	D	M <sub>1</sub>	M <sub>2</sub>	L <sub>1</sub>	L <sub>2</sub>	L <sub>3</sub>	L	Magazin Magazine
SHLGB07	7	M4	M5	11,5	42	10	63,5	BECHLER
SHLGB10	10	M5	M6	14	68	14	96	BECHLER
SHLGB10-2	10	M5	M6	14	56	14	84	BECHLER
SHLGTO045	4,5	M3	M3 IG	5		--	62	TORNOS
SHLGTO055	5,5	M3	M3 IG	8	55	--	63	TORNOS
SHLGTO07	7	M4	M5	12	42	10	64	TORNOS
SHLGTO075	7,5	M4	M5	11,5	42	10,5	64	TORNOS
SHLGTO085	8,5	M5	M5	12	41,5	10	63,5	TORNOS
SHLGTO105	10,5	M6	M6	14	45	11	70	TORNOS

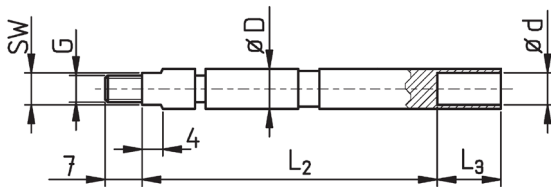
## SPANNHÜLSENLAGERUNGEN / REVOLVING ENDS für GAUTHIER, IEMCA, LNS Lademagazine / Bar Loaders



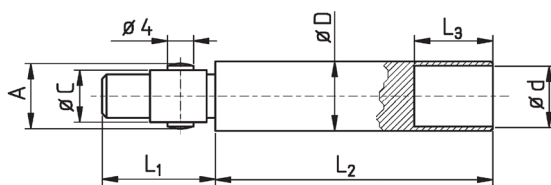
Bestell-Nr. Order-No.	D	M <sub>1</sub>	M <sub>2</sub>	S/W	L <sub>1</sub>	L <sub>2</sub>	L <sub>3</sub>	Magazin Magazine
SHLGG05	5,0	M4	M4	4	7	73	11	GAUTHIER/IEMCA
SHLGG055	5,5	M4	M4	4	7	73	11	* GAUTHIER/IEMCA
SHLGG07	7,0	M5	M5	6	7	79	11	GAUTHIER
SHLGG075	7,5	M5	M5	6	7	79	11	* GAUTHIER
SHLGM07	7,0	M4	M5	6	8	115	11	LNS Mini Sp
SHLGM075	7,5	M4	M5	6	8	115	11	* LNS Mini Sp
SHLGM12	12	M6	M6	9	Gesamtlänge / total length 72 mm			LNS Mini Sp

\* Standardausführung für Kanal D5 bzw. D7 / \* Standard version for channel D5 resp. D7

## SPANNHÜLSENLAGERUNGEN / REVOLVING ENDS für TRAUB, FMB Lademagazine / Bar Loaders

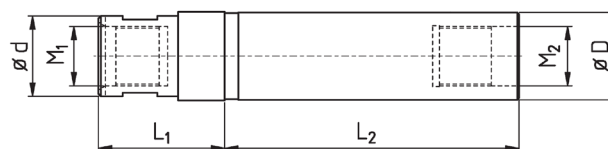


Bestell-Nr. Order-No.	D	G	d	SW	L <sub>2</sub>	L <sub>3</sub>	Magazin Magazine
SHLGT05	5,5	M4	4,5	4	56	12	TRAUB/FMB
SHLGT07	7,5	M5	6,5	6	63	15	TRAUB/FMB



Bestell-Nr. Order-No.	D	A	C	d	L <sub>1</sub>	L <sub>2</sub>	L <sub>3</sub>	Magazin Magazine
SHLGT10	10	9,9	7	9	24	63,5	18	TRAUB
SHLGT12	12	11,9	8	11	24	63,5	18	TRAUB

## SPANNHÜLSENLAGERUNGEN / REVOLVING ENDS für IEMCA Lademagazine / Bar Loaders



Bestell-Nr. Order-No.	D	d	L <sub>1</sub>	L <sub>2</sub>	M <sub>1</sub>	M <sub>2</sub>
SHLGI25	25	23	40	81	M17x1	M17x1
SHLGI30	30	30	49	91	M25x1,5	M20x1
SHLGI40	40	45	51	114	M25x1,5	Ø30

## SPANNHÜLSENLAGERUNGEN / REVOLVING ENDS für IEMCA, BOSS Lademagazine / Bar Loaders

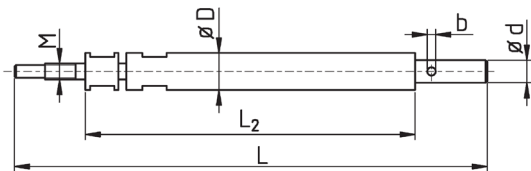


Bild 1

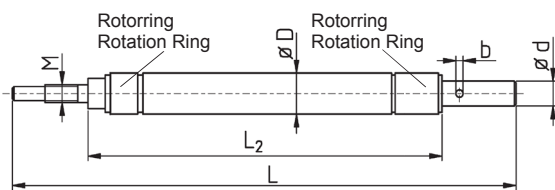


Bild 2



Bestell-Nr. Order-No.	D	d	$L_2$	L	M	b	Bild	
SHLGI12	12	8	109	172	M7x0,75	3	1	Für Spannhülsen DI original IEMCA
SHLGI15	15	12	132,5	195	M8x1	4	2	
SHLGI16	16	12	132,5	195	M8x1	4	2	For Bar Feed Collets original IEMCA
SHLGI18	18	12	132,5	195	M8x1	4	2	
SHLGI20	20	14	132,5	210	M10x1	-	2	
SHLGI23	23	14	132,5	210	M10x1	4	2	

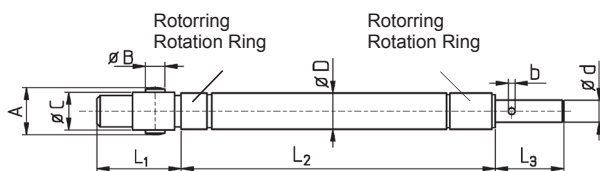


Bild 3

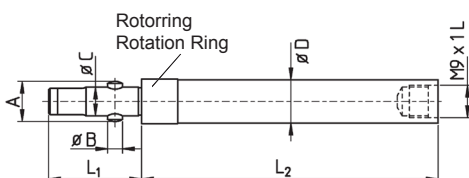
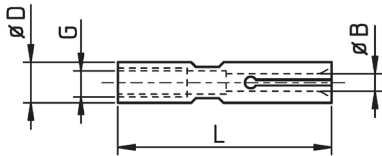


Bild 4



Bestell-Nr. Order-No.	D	d	$L_1$	$L_2$	$L_3$	A	B	C	b	Bild	
SHLGJ12	12	8	27	113	30	12	4	8	3	3	Für Spannhülsen mit Querloch
SHLGJ12-2	12	--	26	83	--	12	4	8	--	4	
SHLGJ15	15	12	26	127	35	15	6	11	4	3	For Bar Feed Collets pinned type
SHLGJ16	16	12	26	127	35	16	6	11	4	3	
SHLGJ18	18	12	26	127	35	18	6	11	4	3	
SHLGJ20	20	14	37	126	33	20	8	14	-	3	

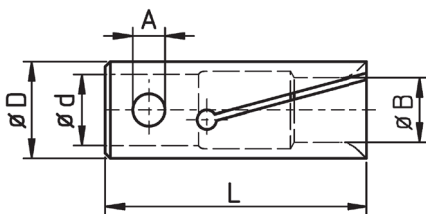
## SPANNHÜLSEN für Lademagazine / BAR FEED COLLETS for Bar Loaders für FMB, IEMCA, LNS, TRAUB, TORNOS



mit Gewinde  
with Thread



Bestell-Nr. Order-No.	D	G/d	A	L	B min.	B max.	stg. step
SHD05	5	M4	-	37	0,8	4,5	0,1
SHD07	7	M5	-	37	0,6	6,0	0,1



mit Querbefestigung  
Pinned type



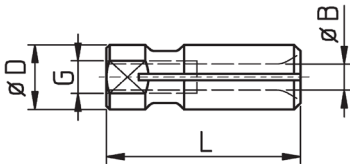
Bestell-Nr. Order-No.	D	G/d	A	L	B min.	B max.	stg. step
SHD10	10	7	4	40	1,0	9,0	0,5
SHD11	11	7	4	40	9,5	10,0	0,1
SHD12	12	8	4	40	1,5	10,5	0,5
SHD13	13	8	4	40	2,0	12,0	0,5
SHD14	14	8	4	40	8,0	13,0	0,5
SHD15	15	11	6	40	2,0	13,5	0,5
SHD16	16	11	6	40	4,0	15,0	0,5
SHD18	18	11	6	40	3,0	17,0	0,5
SHD20	20	14	8	65	2,0	19,0	0,5
SHD21	21	14	8	65	18,0	20,0	0,5
SHD22	22	14	8	65	4,0	21,0	0,5
SHD24	24	20	8	65	16,0	23,0	0,5
SHD25	25	20	8	65	2,0	24,0	0,5
SHD28	28	20	8	65	3,0	27,0	0,5
SHD30	30	20	8	65	4,0	29,0	0,5
SHD32	32	20	8	65	3,0	31,0	0,5
SHD34	34	20	8	65	28,0	33,0	0,5
SHD36	36	20	8	65	4,0	35,0	0,5
SHD42	42	20	8	65	15,0	41,0	1,0
SHD52	52	20	8	65	40,0	51,0	1,0

Dünnwandige Spannhülsen auch als „Longlife“ lieferbar  
Zollmaße bis 1/16“-stg. ohne Aufpreis

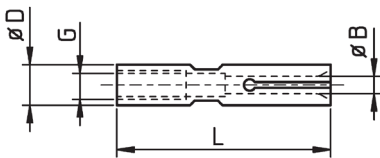
Thin-walled Bar Feeder Collets also available in „Longlife“-type  
Imperial sizes up to 1/16“-step without extra charge



## SPANNHÜLSEN für Lademagazine / BAR FEED COLLETS for Bar Loaders für BECHLER, LNS, TRAUB, TORNOS



Bestell-Nr. Order-No.	D	G	L	B min.	B max.	stg. step
SHB07	7	M5	26	1,0	6,3	0,1
SHB10	10	M5	26	1,5	8,5	0,1

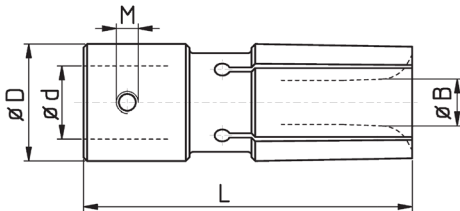


Bestell-Nr. Order-No.	D	G	L	B min.	B max.	stg. step
SHL06	6	M4	30	0,6	5,0	0,1
SHL07	7	M4	30	1,0	6,0	0,1
SHL10	11	M5	30	1,5	9,0	0,1
SHL12	12	M6	30	2,0	11,0	0,5
SHL125	12,5	M6	30	8,0	12,0	0,5

Dünnwandige Spannhülsen auch als „Longlife“ lieferbar

Thin-walled Bar Feeder Collets also available in „Longlife“-type

## SPANNHÜLSEN für Turbo-Lademagazine / BAR FEED COLLETS for Turbo Bar Loaders für FMB, BREUNING IRCO, LNS, TORNOS



Bestell-Nr. Order-No.	D	d	L	M	B min.	B max.	stg. step
SHTD25	25	20	90	M5	2,5	24,0	0,5
SHTD28	28	20	90	M5	5,0	26,0	0,5
SHTD30	30	20	90	M6	3,0	28,0	0,5
SHTD32	32	20	90	M6	2,5	30,5	0,5
SHTD33	33	20	90	M6	30,0	31,0	1,0
SHTD34	34	20	90	M6	6,0	32,5	1,0
SHTD36	36	20	90	M8	4,0	34,0	0,5
SHTD38	38	20	90	M8	10,0	36,0	0,5
SHTD40	40	20	90	M8	7,0	38,5	1,0
SHTD42	42	20	90	M8	3,0	40,0	1,0
SHTD45	45	20	90	M8	10,0	43,0	1,0
SHTD50	50	20	90	M8	6,0	48,5	1,0
SHTD54	54	20	90	M8	20,0	51,0	1,0
SHTD55	55	20	90	M8	20,0	52,0	1,0
SHTD58	58	20	90	M8	20,0	55,0	1,0
SHTD60	60	20	90	M8	10,0	58,5	1,0
SHTD63	63	20	90	M8	10,0	61,5	1,0
SHTD65	65	20	90	M8	8,0	63,5	1,0
SHTD70	70	20	90	M8	40,0	68,0	1,0
SHTD73	73	20/35	90	M8	40,0	71,0	1,0
SHTD75	75	20/35	90	M8	40,0	73,0	1,0
SHTD80	80	35	90	M8	40,0	77,0	1,0
SHTD90	90	35	90	M8	50,0	86,0	1,0
SHTD100	100	35	110	M8	60,0	95,0	1,0

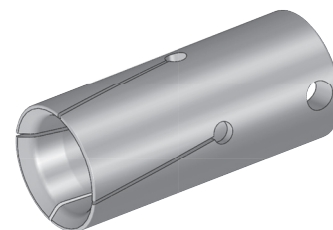
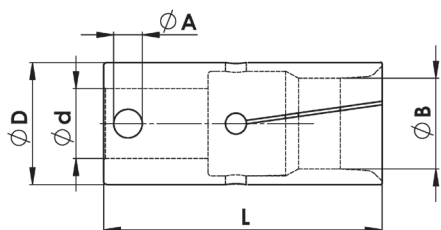
Dünnwandige Spannhülsen auch als „Longlife“ lieferbar  
Zollmaße bis 1/16“-stg. ohne Aufpreis

Alle Spannhülsen auch als XT-Ausführung (definierte Spannkraft) lieferbar

Thin-walled Bar Feeder Collets also available in „Longlife“-type  
Imperial sizes up to 1/16“-step without extra charge

All Bar Feed Collets also available in XT-type (defined clamping force)

## SPANNHÜLSEN für TOP AUTOMAZIONI / BAR FEED COLLETS for TOP AUTOMAZIONI



Bestell-Nr. Order-No.	D	d	L	A	B min.	B max.	stg. step
SHTA20	20	14	80	5	3,0	17,5	0,5
SHTA25	25	14	80	5	16,0	22,0	0,5
SHTA30	30	20	80	8	21,0	27,5	0,5
SHTA32	32	20	80	8	26,0	29,0	0,5
SHTA35	35	20	80	8	26,0	32,0	0,5
SHTA40	40	20	80	8	31,0	38,0	0,5
SHTA42	42	20	80	8	36,0	40,0	0,5
SHTA45	45	20	80	8	36,0	42,0	0,5
SHTA50	50	20	80	8	41,0	47,0	0,5
SHTA55	55	20	80	8	46,0	52,0	1,0
SHTA60	60	20	80	8	51,0	56,0	1,0
SHTA65	65	20	80	8	56,0	62,0	1,0

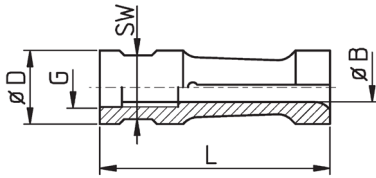
## SPANNHÜLSEN für TOP AUTOMAZIONI / BAR FEED COLLETS for TOP AUTOMAZIONI Sonderlösungen / Special Solutions

Bestell-Nr. Order-No.	D	d	L	A	B min.	B max.	stg. step
SSHTA20	20	14	80	5	17,0	19,0	0,5
SSHTA25	25	14	80	5	21,7	24,0	0,5
SSHTA30	30	20	80	8	27,0	29,0	0,5
SSHTA32	32	20	80	8	29,0	31,0	0,5
SSHTA35	35	20	80	8	31,5	34,0	0,5
SSHTA40	40	20	80	8	37,0	39,0	0,5
SSHTA42	42	20	80	8	37,0	41,0	0,5
SSHTA45	45	20	80	8	42,0	44,0	0,5
SSHTA50	50	20	80	8	47,0	49,0	0,5
SSHTA51	51	20	80	8	49,0	50,0	0,5
SSHTA52	52	20	80	8	47,0	51,0	0,5
SSHTA55	55	20	80	8	52,5	54,0	0,5
SSHTA60	60	20	80	8	57,0	59,0	0,5
SSHTA65	65	20	80	8	62,5	64,0	0,5

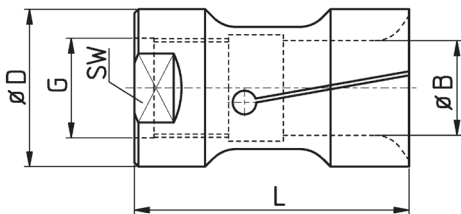
Dünnwandige Spannhülsen auch als „Longlife“ lieferbar

Thin-walled Bar Feeder Collets also available in „Longlife“-type

## SPANNHÜLSEN für Lademagazine / BAR FEED COLLETS for Bar Loaders für IEMCA mit Aufschraubgewinde / with Right Hand Thread



Bestell-Nr. Order-No.	D	G	L	SW	B min.	B max.	stg. step
SHI07	7,5	M5x0,5	40	6	1,5	6,5	0,1
SHI10	10	M6x0,75	40	8	1,5	9,0	0,1
SHI12	12	M7x0,75	42	10	1,6	10,5	0,1
SHI15	15	M8x1	42	13	3,0	13,0	0,1
SHI16	16	M8x1	42	14	6,0	15,0	0,5
SHI18	18	M8x1	42	14	11,0	16,5	0,5
SHI20	20	M10x1	59	17	2,5	18,5	0,1
SHI23	23	M10x1	59	19	11,0	21,0	0,5
SHI25	25	M10x1	59	22	8,0	23,0	0,5
SHI27	27	M10x1	59	22	16,0	25,5	0,5
SHI30	30	M10x1 *	65	28	6,0	28,0	0,5
SHI31 **	31	M10x1 *	65	28	8,0	29,0	0,5
SHI32	32	M10x1 *	65	28	6,0	30,0	0,5
SHI33	33	M10x1 *	65	28	8,0	32,0	0,5
SHI34	34	M25x1,5	65	28	5,0	32,0	0,5
SHI35	35	M25x1,5	65	30	19,0	33,0	0,5



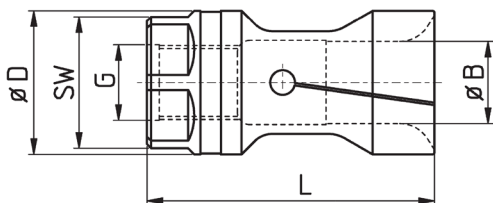
Bestell-Nr. Order-No.	D	G	L	SW	B min.	B max.	stg. step
SHI36	36	M25x1,5	65	34	20,0	34,0	0,5
SHI40	40	M25x1,5	70	36	10,0	37,0	0,5
SHI42	42	M25x1,5	70	36	20,0	40,0	0,5
SHI46	46	M25x1,5	72	40	20,0	44,0	0,5
SHI50	50	M25x1,5	80	46	43,0	48,0	0,5
SHI52	52	M25x1,5	80	50	45,0	50,0	0,5
SHI54	54	M25x1,5	80	50	47,0	52,0	0,5
SHI55	55	M25x1,5	80	50	20,0	54,0	0,5
SHI56	56	M25x1,5	80	50	20,0	54,0	0,5
SHI58	58	M25x1,5	80	50	20,0	54,0	0,5
SHI60	60	M25x1,5	80	55	20,0	57,0	0,5
SHI65	65	M25x1,5	80	55	56,0	63,0	0,5
SHI70	70	M25x1,5	80	55	60,0	68,0	0,5
SHI75	75	M25x1,5	80	55	67,0	72,0	0,5
SHI80	80	M25x1,5	80	Querbohrung Cross Hole	50,0	77,0	0,5

\*Auch mit folgenden Gewinden lieferbar: M17x1 ; M25x1,5 ; M18x1,5 ; M18x1,5L  
\*Also available with threads:

Dünnwandige Spannhülsen auch als „Longlife“ lieferbar  
\*\*Auch für Stama-Magazine

Thin-walled Bar Feeder Collets also available in „Longlife“-type  
\*\*Also for Stama loaders

## SPANNHÜLSEN für Lademagazine / BAR FEED COLLETS for Bar Loaders für P. CUCCHI mit Aufschraubgewinde links / with Left Hand Thread



Bestell-Nr. Order-No.	D	G	L	SW	B min.	B max.	stg. step	Magazin Magazine
SHC19	19	M10x1L	60	17	4,0	17	0,1	CUCCHI PB20
SHC20	20	M10x1L	60	17	8,0	18,5	0,1	CUCCHI PB20
SHC23	23	M14x1L	60	21	4,0	21,0	0,5	CUCCHI PB23
SHC24	24	M14x1L	60	22	21,0	22,0	0,5	CUCCHI PB24
SHC25	25	M14x1L	60	22	6,0	23,5	0,5	CUCCHI PB24
SHC28	28	M18x1,5L	65	24	21,0	24	0,5	CUCCHI PB28
SHC29	29	M18x1,5L	65	27	5,0	27,5	0,5	CUCCHI PB30
SHC30	30	M18x1,5L	65	28	18,0	28	0,5	CUCCHI PB30
SHC32	32	M18x1,5L	65	28	20,0	30,0	0,5	CUCCHI PB32
SHC33	33	M18x1,5L	70	30	25,0	31,0	0,5	CUCCHI PB35A
SHC34	34	M18x1,5L	70	30	8,0	32,5	0,5	CUCCHI PB35A
SHC35	35	M18x1,5L	70	32	10,0	33,0	0,5	CUCCHI PB35
SHC37	37	M25x1,5L	70	32	10,0	35,0	0,5	CUCCHI PB38
SHC38	37,8	M25x1,5L	70	32	30,0	36,0	0,5	CUCCHI PB38
SHC39	39	M25x1,5L	70	36	16,0	37,0	0,5	CUCCHI PB38
SHC40	39,8	M25x1,5L	70	36	20,0	38,0	0,5	CUCCHI PB42
SHC41	41	M25x1,5L	70	36	19,0	40,0	0,5	CUCCHI PB42
SHC42	42	M25x1,5L	70	36	20,0	40,0	0,5	CUCCHI PB42
SHC43	42,8	M25x1,5L	70	36	20,0	41,0	0,5	CUCCHI PB42
SHC44	44	M25x1,5L	70	36	20,0	42,0	0,5	CUCCHI PB42
SHC47	47	M30x1,5L	70	40	10,0	45,0	0,5	CUCCHI PB48
SHC50	49,7	M30x1,5L	70	50	20,0	48,0	0,5	CUCCHI PB
SHC55	55	M30x1,5L	80	50	20,0	53,0	0,5	CUCCHI PB
SHC60	59 (59,7)	M30x1,5L	80	56	19,0	58,0	0,5	CUCCHI PB60
SHC65	65	M30x1,5L	80	60	58,0	62,0	0,5	CUCCHI PB68
SHC70	69,5	M30x1,5L	80	Nut	60,0	67,0	0,5	CUCCHI PB70-72
SHC75	75	M30x1,5L	80	Nut	65,0	72,0	0,5	CUCCHI PB75
SHC88	88	Bohrung / Bore 40	110	--	60,0	82	0,5	CUCCHI PB90

Dünnwandige Spannhülsen auch als „Longlife“ lieferbar

Thin-walled Bar Feeder Collets also available in „Longlife“-type